

# MADE YOU

WORDS BY  
TREVOR PEACOCK

MUSIC BY  
JOHN BARRY

*SUNG BY*

**ADAM FAITH**

*IN*

**BEAT GIRL**

A RENOWN PICTURES RELEASE

*with*

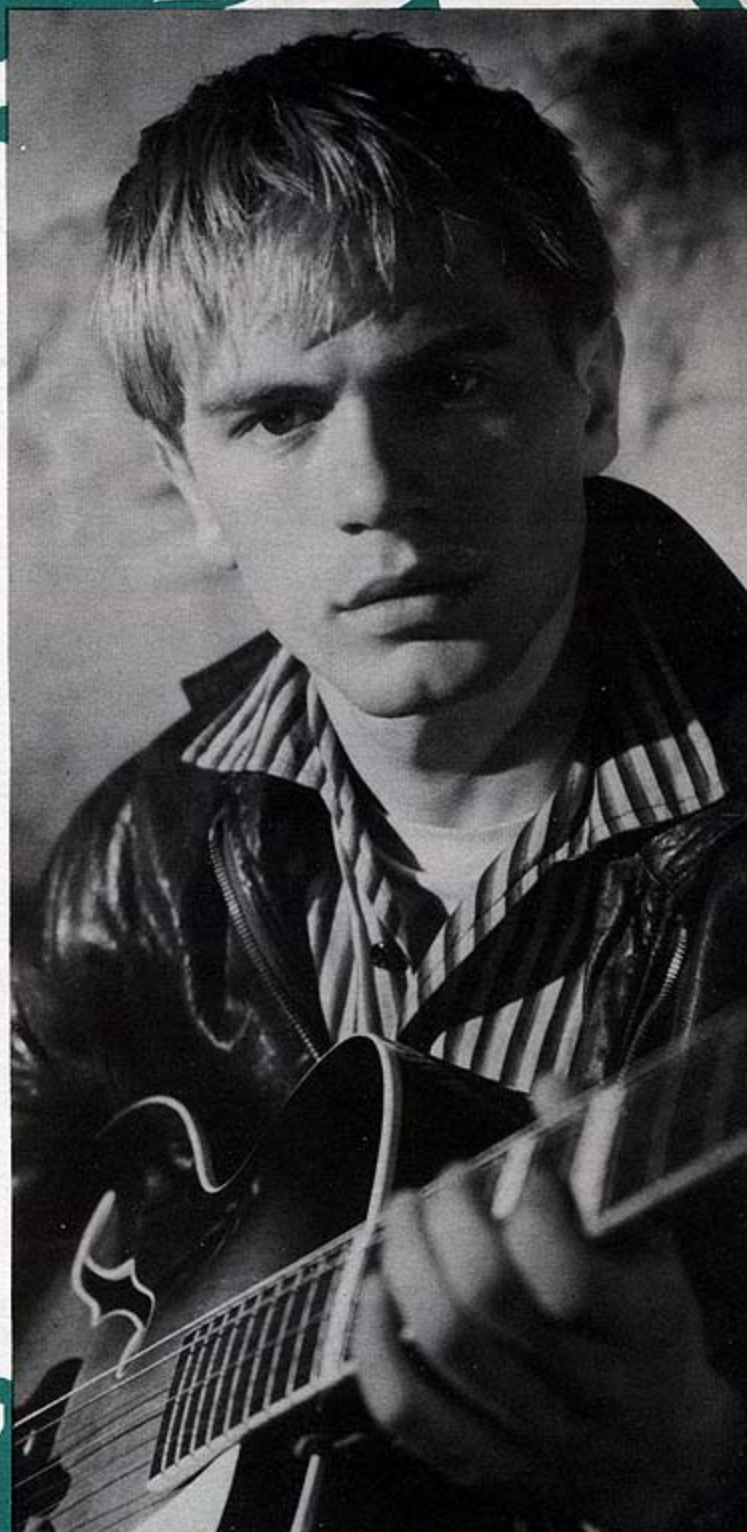
**DAVID FARRAR  
NOELLE ADAM  
CHRISTOPHER LEE  
ADAM FAITH**

*& INTRODUCING*

**GILLIAN HILLS**

*Produced by* **GEORGE WILLOUGHBY**

*Directed by* **EDMOND T. GREVILLE**



ROBBINS MUSIC CORPORATION LTD.  
23, DENMARK STREET, LONDON, W.C.2.

*Selling Agents* **FRANCIS, DAY & HUNTER LTD.**  
138-140, CHARING CROSS ROAD, LONDON, W.C.2.

2/



## MADE YOU

Words by  
TREVOR PEACOCK

Music by  
JOHN BARRY

1. I saw you sit-ting there so cool Like you  
2. I feel such a cra-zy clown You're the  
3. I'm not giv-ing up the chase I don't

just come out from school Look-ing such a pret-ty sight  
big-gest thing in town Come on hon-ey is-n't fair  
want to lose this case Ev-'ry time I make a play

|| s<sub>1</sub> .s<sub>1</sub> :m<sub>1</sub> .r<sub>1</sub> | m<sub>1</sub> .m<sub>1</sub> :d<sub>1</sub> | C<sup>4e</sup> l.....s :l .s | l.....s :m | d :- | - :s .s |

Like a stick of dy - na - mite Sit - ting on a cof - fee bar stool  
 Nev - er get - ting an - y - where How do I melt you down } You're a  
 Ba - by you just run a - way I nev - er make first base }

C6

|| t .t :r' .r' | t :s .s | f .f :d' .d' | d' .s :l .s | : | d' :- |

gas - ser that's a fact and I nev - er can re - lax un - til I've made

G7 Dm7 C

1 & 2 3

s :- | - . : s :- | - . : | : | : | : | : | : | : ||

you. — you. —